



foodmate
Poultry Processing Systems

ULTIMATE



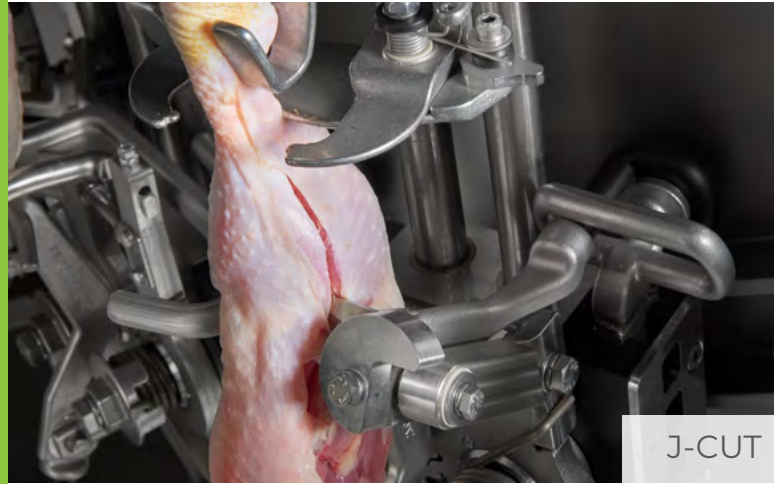
The Ultimate Whole Leg Deboner

We make it **SIMPLE**

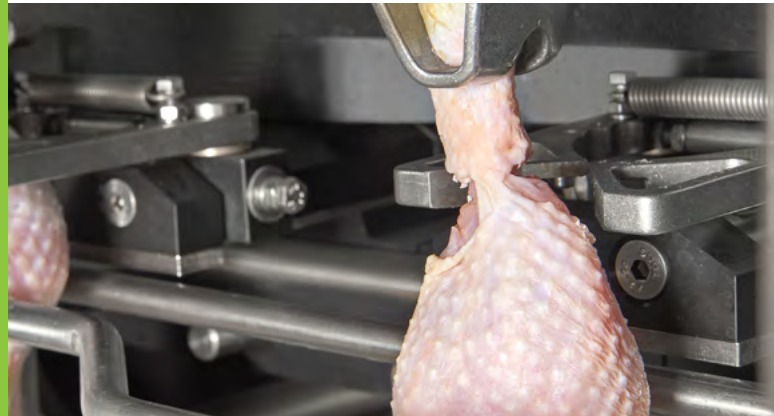
You make it **PROFITABLE**

ULTIMATE

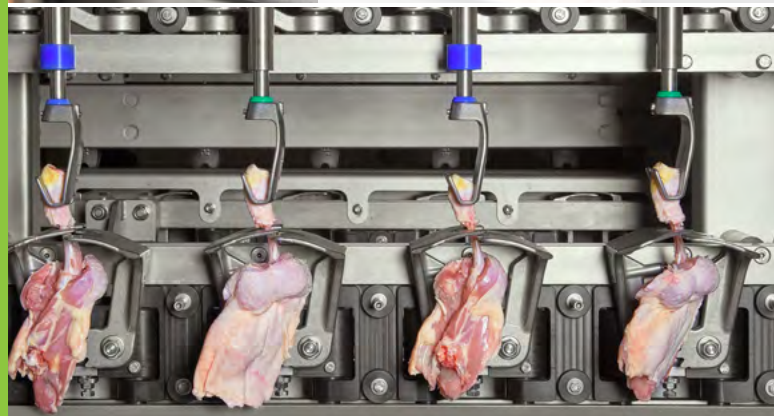
THE WHOLE LEG DEBONER



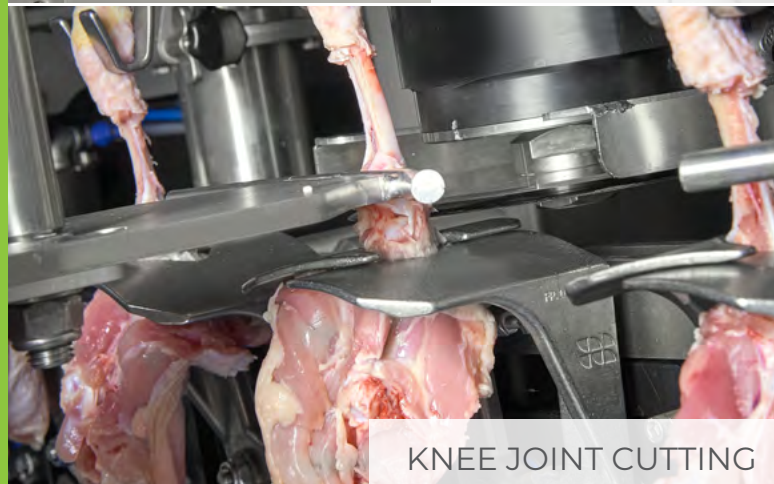
J-CUT



DRUM TENDON CUTTING



DRUM SCRAPING



KNEE JOINT CUTTING

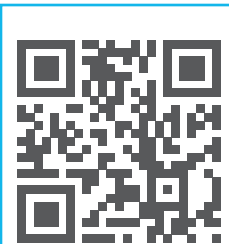


KEY FEATURES

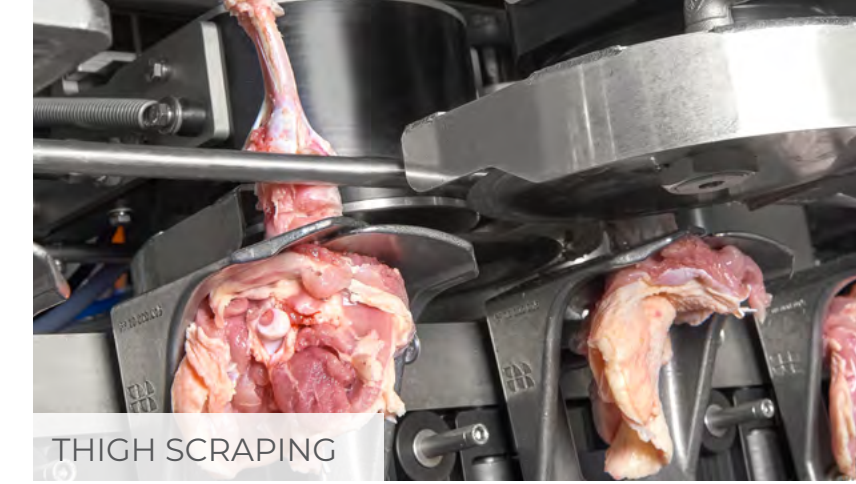
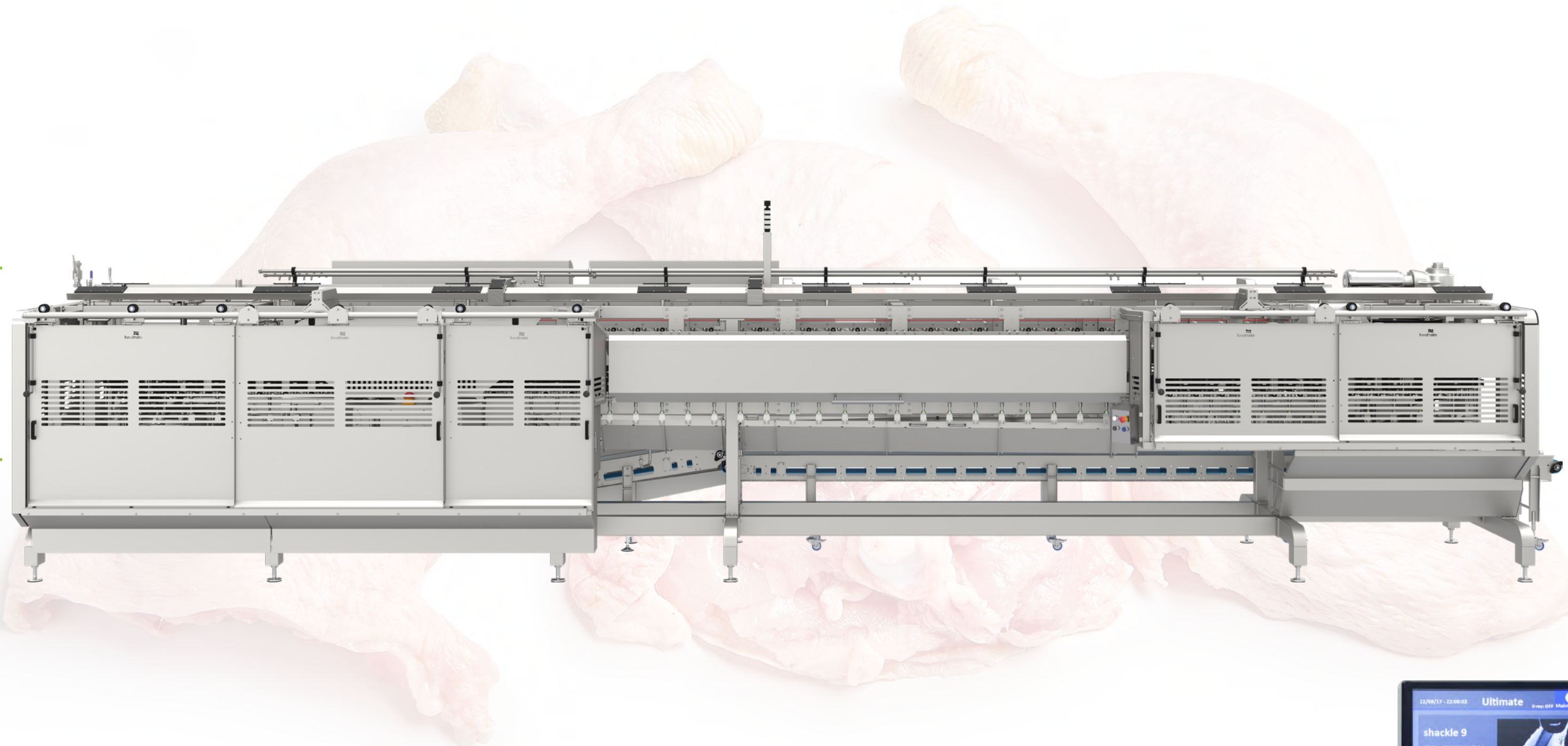
The combination of X-Ray technology and shackle height adjustment, allows the blades to cut precisely around the kneecap and the knee joint, ensuring high yield and cartilage free meat.

The meat is efficiently scraped from the bone to ensure maximum yield and high quality leg meat; keeping labor to a minimum.

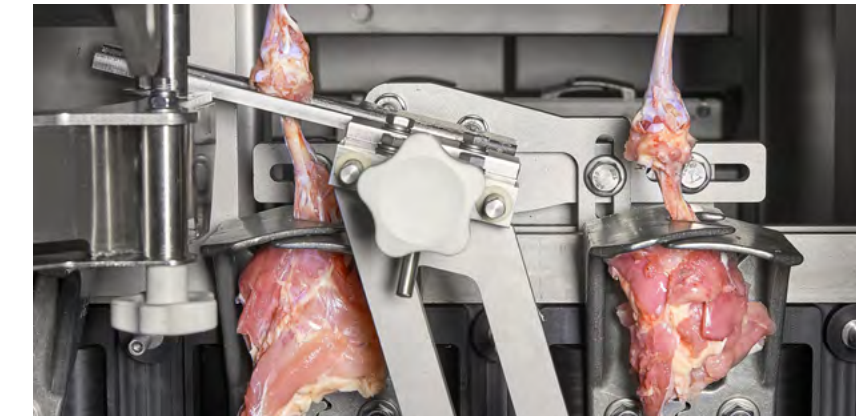
Pioneers in Intelligent Deboning



SEE THE
ULTIMATE
IN ACTION



THIGH SCRAPING



MEAT HARVESTING



BONE UNLOADING



Leading Technology
in Dark Meat Deboning Solutions

X-RAY MEASURING SYSTEM

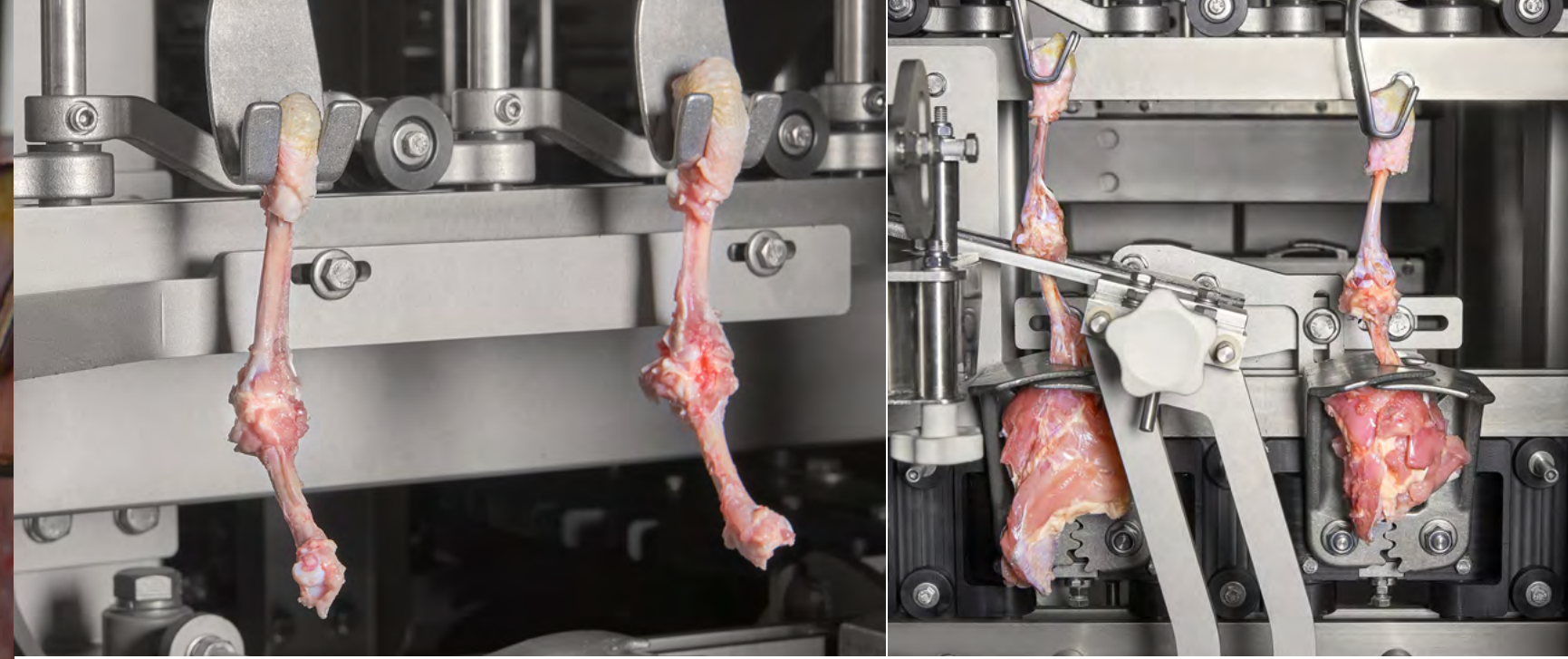
The ULTIMATE Whole Leg Deboner uses an X-Ray measuring system to precisely measure each leg, it automatically adjusts for each leg in real-time at a speed of 6,000 legs per hour.

THE INTELLIGENT WHOLE LEG DEBONER

ULTIMATE

X-Ray technology + Cuts with surgical precision

The ULTIMATE is part of the efficient and intelligent dark meat deboning solutions including exclusive X-Ray technology. Our dark meat deboning solutions produces final products that meet the highest standards set by retailers and institutional organizations from around the world.



ADVANTAGES

- ✓ X-Ray measurement system
- ✓ Individual sizing for each leg
- ✓ User-friendly control panels
- ✓ Output speed of 6,000 legs per hour
- ✓ Automatic J-Cut station
- ✓ Semi self-cleaning system



INITIAL PRODUCT

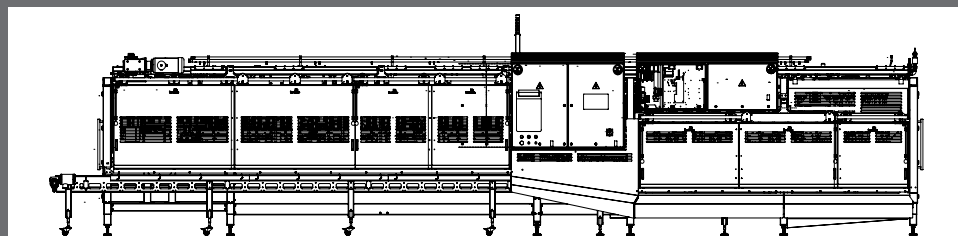
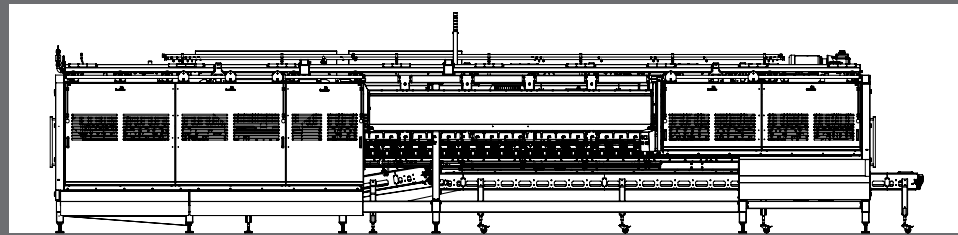


FINAL PRODUCT



BYPRODUCT

TECHNICAL SPECIFICATIONS	
Frame and motor	Stainless steel
Power Consumption	16 kW
Length	12350 mm
Width	2350 mm
Height	2911 mm
Weight	approx. 8000 kg
Air supply	dry compressed air, 6-8 Bar
Air consumption	21 m ³ / hr
Sanitation water cons.	7.8 m ³ / hr (35 BAR)
Sanitation water cons.	13 m ³ / hr (100 BAR)





foodmate

Poultry Processing Systems

www.foodmate.nl // info@foodmate.nl

The Netherlands (HQ) - USA - UK - Poland - Korea - Brazil